

# Men's Size Guide

SIZE EU / DE	42	44	46	48	50	52	54	56	58	60	62	64
SIZE FR	36	38	40	42	44	46	48	50	52	54	56	58
A. Your Chest (cm)	84	88	92	96	100	104	108	112	116	120	124	128
B. Your Waist (cm)	72	76	80	84	88	92	97	102	107	112	117	122
C. Your Hips (cm)	88	92	96	100	104	108	112	116	120	124	128	132
Inseam (cm)	77	78	79	81	82	83	84	84	84	85	85	85

SIZE	XS	S	M	L	XL	2XL	3XL	4XL
A. Chest (cm)	86	92	98	104	110	116	122	128
B. Your Waist (cm)	74	80	86	92	99,5	107	114,5	122
C. Your Hips (cm)	90	96	102	108	114	120	126	132

# Women's Size Guide

SIZE EU / DE	32	34	36	38	40	42	44	46
SIZE FR	34	36	38	40	42	44	46	48
A. Your Chest (cm)	76	80	84	88	92	96	100	104
B. Waist (cm)	62	65	68	72	76	80	84	88
C. Your Hips (cm)	86	89	92	96	100	104	108	112
Inseam (cm)	76	77	78	79	80	81	82	83

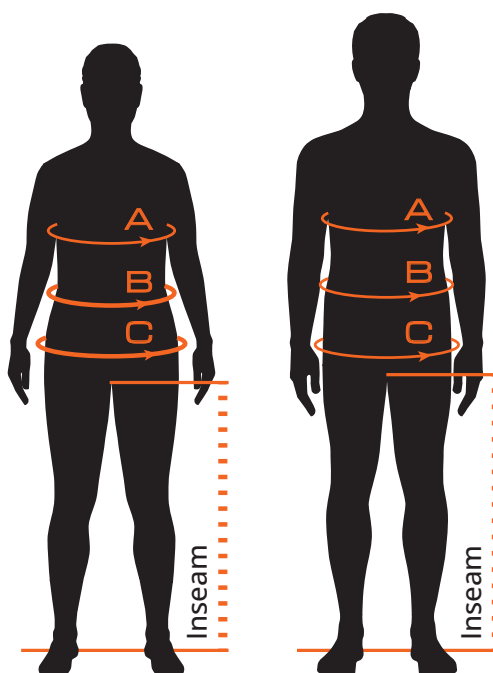
**Tip for choosing trouser size:**  
If you have a narrow hip, you may want to check the men's size guide to find a better fit.

SIZE	XS	S	M	L	XL	2XL
A. Chest (cm)	74	82	90	98	108	120
B. Your Waist (cm)	60	66	74	82	92	104
C. Your Hips (cm)	84	90	98	106	116	128

Actual sizing can vary for different body sizes, heights and weights. To find a comfortable fit, we recommend trying on two different sizes to determine the correct size for you. Please be aware that clothes have different styles of fitting and wearing looseness which may vary from model to model.

Measure yourself with underwear on.  
Hold the tape snugly, but not too tight, keeping it level and straight.

- A. Chest      Measure around the fullest part of your chest. Make sure the tape is level and sits comfortably — not too tight.
- B. Waist      Measure around your natural waistline, which is the narrowest part of your waist
- C. Hip        Stand with your feet together and measure around the fullest part of your hips. The tape should move smoothly over the hips.
- Inseam      The inseam measurement refers to the length of the garment. Measure the inside leg from the crotch to the bottom hem of the trousers.



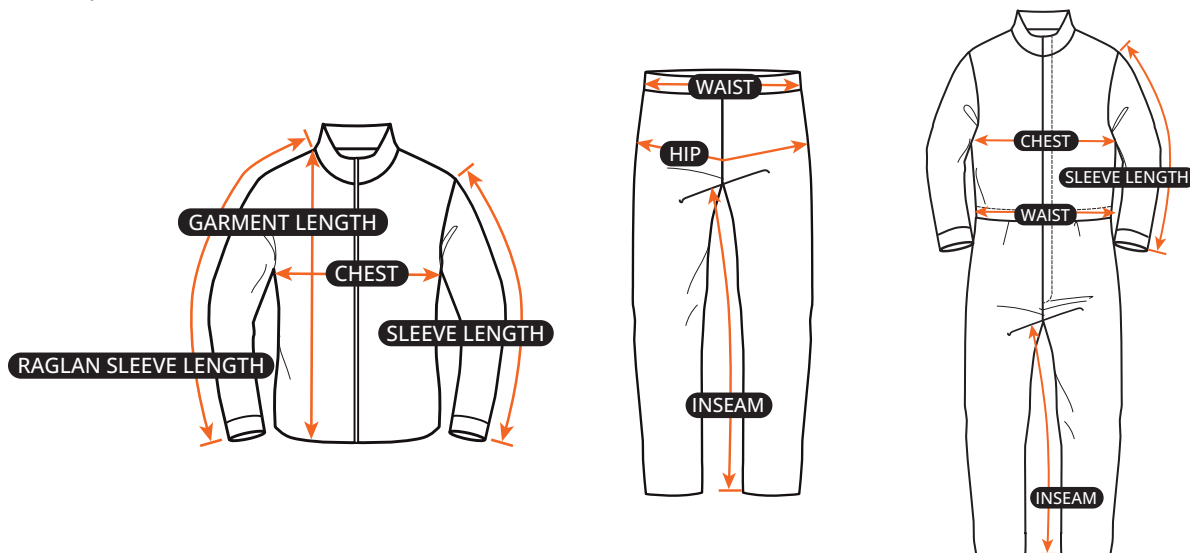
In cases where your body measurements are in-between sizes, go with a larger size to allow enough room for ease of movement. Choose smaller size for tighter fit.

# Not sure about sizing

Please follow these simple steps to choose the right size:

- Take a measuring tape and use your current workwear, or another similar garment that fits you well. Lay the garment flat on a table.
- Measure the key points shown in the product image.
- Compare your measurements with the product size chart.
- Select the size that is closest to your own garment's measurements.
- If you are between two sizes, we recommend choosing the larger size for a more comfortable fit.

“Stretched waist width” refers to the measurement across a garment’s waist from one side seam to the other when the elastic is pulled taut.



<b>LGFL122 Fleece Jacket</b>	<b>XS</b>	<b>S</b>	<b>M</b>	<b>L</b>	<b>XL</b>	<b>2XL</b>	<b>3XL</b>	<b>4XL</b>
Chest, garment (cm)	47,5	51	54	57	60,5	64	67,5	71
Garment length (cm)	70	71	72	73	74	75	76	77

<b>LGJA111 Jacket</b> <b>LGJA113 Jacket</b>	<b>XS</b>	<b>S</b>	<b>M</b>	<b>L</b>	<b>XL</b>	<b>2XL</b>	<b>3XL</b>	<b>4XL</b>
Chest, garment (cm)	51,5	55	58	61	64,5	68	71,5	75
Sleeve length, garment (cm)	65	66	67	68	69	70	70,5	71
Garment length (cm)	70	71	72	73	74	75	76	77

<b>LGJA127 Softshell Jacket</b>	<b>XS</b>	<b>S</b>	<b>M</b>	<b>L</b>	<b>XL</b>	<b>2XL</b>	<b>3XL</b>	<b>4XL</b>
Chest, garment (cm)	50,5	54	57	60	63,5	67	70,5	74
Raglan sleeve length, garment (cm)	79	80,5	82	83,5	85	86,5	88	89,5
Garment length (cm)	70	71	72	73	74	75	76	77

<b>LGJA127W Softshell Jacket Women</b>	<b>XS</b>	<b>S</b>	<b>M</b>	<b>L</b>	<b>XL</b>	<b>2XL</b>
Chest, garment (cm)	44	48	52	56	61	67
Sleeve length, garment (cm)	72	73,5	75	76,5	78	79,5
Garment length (cm)	61	62,5	64	65,5	67	68,5

<b>LGCV123 Coverall</b> <b>LGCV126 Coverall</b>	<b>XS</b>	<b>S</b>	<b>M</b>	<b>L</b>	<b>XL</b>	<b>2XL</b>	<b>3XL</b>	<b>4XL</b>
Chest, garment (cm)	56,5	60	63	66	69,5	73	76,5	80
Stretched waist, garment (cm)	44	48	52	56	61	66	71	76
Inseam, garment (cm)	75	76	77	78	79	80	81	81

<b>LGTR112 Trousers</b>	<b>42</b>	<b>44</b>	<b>46</b>	<b>48</b>	<b>50</b>	<b>52</b>	<b>54</b>	<b>56</b>	<b>58</b>	<b>60</b>	<b>62</b>	<b>64</b>
Waist, garment (cm)	37	39	41	43	45	47	49,5	52	54,5	57	59,5	62
Hip, garment (cm)	47	49	51	53	55	57	59	61	63	65	67	69
Inseam, garment (cm)	77	77	78	79	80	81	82	83	83	84	84	84

<b>LGTR114 Trousers</b>	<b>42</b>	<b>44</b>	<b>46</b>	<b>48</b>	<b>50</b>	<b>52</b>	<b>54</b>	<b>56</b>	<b>58</b>	<b>60</b>	<b>62</b>	<b>64</b>
Waist, garment (cm)	36	38	40	42	44	46	48,5	51	53,5	56	58,5	61
Hip, garment (cm)	45	47	49	51	53	55	57	59	61	63	65	67
Inseam, garment (cm)	77	77	78	79	80	81	82	83	83	84	84	84

<b>LGTR114W Trousers Women</b>	<b>36</b>	<b>38</b>	<b>40</b>	<b>42</b>	<b>44</b>	<b>46</b>
Waist, garment (cm)	36	38	40	42	44	46
Hip, garment (cm)	51	53	55	57	59	61
Inseam, garment (cm)	78	79	80	81	82	83